



Istruzioni per la lettura

Cerca il tuo punteggio in classifica, puoi usare anche lo strumento "trova" all'interno del PDF.

Per i punteggi parimerito non è prevista la medesima posizione in classifica, proprio come nei test di ammissione: in questi casi l'ordine è stabilito tramite parametri specifici.

Seconda Gara Nazionale

marzo 2022

Graduatoria



1	72.7
2	72.6
3	72.2
4	71.8
5	71.5
6	70.4
7	70.4
8	69.7
9	69.2
10	69.1
11	69.1
12	68.9
13	68.8
14	68.5
15	68.4
16	68.1
17	68.1
18	68
19	68
20	67.7
21	67.7
22	67.6
23	67.6
24	67.3
25	67.2
26	67
27	66.6
28	66.3
29	66.2
30	66.1
31	65.9
32	65.9
33	65.5
34	65.4
35	65.4
36	65.2
37	65
38	64.7
39	64.7
40	63.9
41	63.9
42	63.9
43	63.4
44	63.4

45	63.2
46	63.2
47	63.2
48	63.2
49	63.2
50	62.9
51	62.4
52	62.1
53	62.1
54	62
55	61.9
56	61.8
57	61.7
58	61.5
59	61.5
60	61.4
61	61.4
62	61.3
63	61.2
64	60.5
65	60.5
66	60.2
67	60.1
68	60.1
69	59.9
70	59.6
71	59.6
72	59.5
73	59.5
74	59.3
75	59.1
76	59.1
77	59
78	59
79	59
80	59
81	58.9
82	58.8
83	58.7
84	58.7
85	58.7
86	58.7
87	58.6
88	58.6

89	58.6
90	58.5
91	58.5
92	58.5
93	58.3
94	58.3
95	58
96	57.9
97	57.9
98	57.8
99	57.7
100	57.6
101	57.6
102	57.5
103	57.5
104	57.2
105	57.2
106	57.1
107	56.9
108	56.9
109	56.8
110	56.8
111	56.8
112	56.7
113	56.6
114	56.6
115	56.5
116	56.5
117	56.4
118	56.4
119	56.3
120	56.1
121	56.1
122	56.1
123	56
124	56
125	56
126	55.8
127	55.8
128	55.8
129	55.8
130	55.8
131	55.7
132	55.6

133	55.6
134	55.6
135	55.5
136	55.5
137	55.4
138	55.3
139	55.3
140	55.3
141	55.3
142	55.3
143	55.2
144	55.2
145	55.1
146	55
147	54.8
148	54.8
149	54.7
150	54.6
151	54.6
152	54.5
153	54.5
154	54.4
155	54.4
156	54.3
157	54.2
158	54.1
159	54.1
160	53.9
161	53.8
162	53.7
163	53.7
164	53.6
165	53.6
166	53.6
167	53.4
168	53.4
169	53
170	53
171	52.7
172	52.7
173	52.7
174	52.6
175	52.5
176	52.5

177	52.4
178	52.4
179	52.3
180	52.3
181	52.3
182	52.2
183	52.2
184	52.2
185	52
186	52
187	52
188	52
189	51.8
190	51.8
191	51.8
192	51.7
193	51.6
194	51.5
195	51.5
196	51.5
197	51.4
198	51.2
199	51.1
200	51
201	51
202	50.9
203	50.9
204	50.8
205	50.7
206	50.6
207	50.4
208	50.4
209	50.4
210	50.2
211	50.2
212	50.2
213	50.1
214	50.1
215	50
216	50
217	50
218	49.8
219	49.7
220	49.7

221	49.6
222	49.2
223	49.2
224	49
225	48.9
226	48.9
227	48.8
228	48.8
229	48.8
230	48.8
231	48.8
232	48.7
233	48.7
234	48.7
235	48.5
236	48.5
237	48.4
238	48.2
239	48.2
240	48.2
241	48.2
242	48.1
243	48.1
244	48.1
245	47.7
246	47.5
247	47.4
248	47.4
249	47.4
250	47
251	46.9
252	46.9
253	46.8
254	46.8
255	46.8
256	46.7
257	46.7
258	46.6
259	46.4
260	46.3
261	46.2
262	46.2
263	46.2
264	46.1

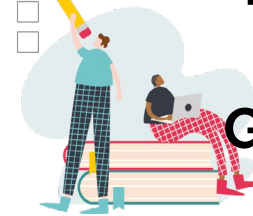
265	46.1
266	46.1
267	46
268	45.9
269	45.9
270	45.9
271	45.5
272	45.5
273	45.3
274	45.2
275	45.2
276	45.2
277	45.1
278	45
279	44.9
280	44.9
281	44.8
282	44.7
283	44.6
284	44.6
285	44.4
286	44.4
287	44.4
288	44.4
289	44.4
290	44.3
291	44.3
292	44.2
293	44.2
294	44.1
295	43.8
296	43.8
297	43.7
298	43.6
299	43.6
300	43.5
301	43.4
302	43.4
303	43.4
304	43.3
305	43.3
306	43.3
307	43.3
308	43.2



Istruzioni per la lettura

Cerca il tuo punteggio in classifica, puoi usare anche lo strumento "trova" all'interno del PDF.

Per i punteggi parimerito non è prevista la medesima posizione in classifica, proprio come nei test di ammissione: in questi casi l'ordine è stabilito tramite parametri specifici.



Seconda Gara Nazionale

marzo 2022

Graduatoria

309	43.2
310	43.1
311	42.8
312	42.7
313	42.6
314	42.5
315	42.5
316	42.5
317	42.4
318	42.4
319	42.2
320	42.1
321	42
322	42
323	42
324	42
325	41.8
326	41.8
327	41.8
328	41.8
329	41.8
330	41.7
331	41.6
332	41.6
333	41.6
334	41.3
335	41.3
336	41.3
337	41.2
338	41.1
339	41
340	40.9
341	40.8
342	40.8
343	40.8
344	40.7
345	40.6
346	40.6
347	40.6
348	40.4
349	40.3
350	40.3
351	40.1
352	40

353	39.9
354	39.9
355	39.9
356	39.9
357	39.8
358	39.7
359	39.7
360	39.6
361	39.5
362	39.4
363	39.3
364	39.3
365	39.2
366	39.2
367	39.1
368	39.1
369	39.1
370	39.1
371	38.9
372	38.8
373	38.8
374	38.7
375	38.7
376	38.6
377	38.6
378	38.4
379	38.3
380	38.2
381	38.2
382	38.1
383	38.1
384	37.9
385	37.9
386	37.7
387	37.5
388	37.4
389	37.3
390	37.2
391	37.2
392	37.2
393	37
394	37
395	36.7
396	36.6

397	36.6
398	36.5
399	36.4
400	36.2
401	36.1
402	36.1
403	36.1
404	36
405	35.8
406	35.8
407	35.7
408	35.6
409	35.5
410	35.4
411	35.3
412	35.1
413	35
414	35
415	34.9
416	34.9
417	34.9
418	34.9
419	34.9
420	34.9
421	34.8
422	34.7
423	34.7
424	34.5
425	34.3
426	34.2
427	33.9
428	33.7
429	33.6
430	33.6
431	33.3
432	33.2
433	33.2
434	33
435	33
436	33
437	33
438	32.8
439	32.7
440	32.4

441	32
442	31.9
443	31.8
444	31.7
445	31.7
446	31.7
447	31.6
448	31.5
449	31.1
450	31
451	30.9
452	30.5
453	30.5
454	30.5
455	29.9
456	29.9
457	29.8
458	29.7
459	29.6
460	29.3
461	29.2
462	29.2
463	29.2
464	29.1
465	29.1
466	28.9
467	28.7
468	28.6
469	28.4
470	28.4
471	28.3
472	28.2
473	28.1
474	28
475	27.9
476	27.9
477	27.8
478	27.6
479	27.5
480	27.4
481	27.3
482	27.3
483	27.3
484	27.3

485	27.2
486	27
487	26.6
488	26.1
489	26
490	25.8
491	25.6
492	25.4
493	25.4
494	25.4
495	25.3
496	25.2
497	25.1
498	25.1
499	25.1
500	24.9
501	24.6
502	24.6
503	24.5
504	24.5
505	24.5
506	24.5
507	24.3
508	24.2
509	24
510	23.9
511	23.5
512	23.5
513	23.4
514	23.3
515	23.3
516	23
517	22.9
518	22.9
519	22.5
520	22.3
521	22.3
522	22
523	21.9
524	21.7
525	21.6
526	21.6
527	21.4
528	21.2

529	20.7
530	20.3
531	19.7
532	19.7
533	19.5
534	19.4
535	19
536	18.9
537	18.7
538	18.3
539	18.3
540	18.1
541	17.8
542	17.2
543	17.1
544	17
545	16.5
546	16.3
547	16.1
548	16
549	15.9
550	15.7
551	15.4
552	15
553	14.9
554	14.8
555	14.6
556	14.5
557	14.4
558	14.4
559	14
560	13.6
561	13.5
562	13.4
563	13.3
564	13.2
565	12.9
566	12.3
567	11.5
568	10.5
569	10.2
570	9.1
571	8.9
572	6.4

573	6.4
574	6
575	5.4
576	5.2
577	4.5
578	4.5
579	4
580	3.1
581	2.4
582	1.7
583	1.5
584	0
585	0
586	0
587	0
588	0
589	-0.4
590	-0.5
591	-3.1